



Lockside House, Chelsea Creek, Chelsea Creek  
Fulham SW6

GARTON JONES.COM



# Lockside House, Chelsea Creek, Chelsea Creek Fulham, SW6

GARTON JONES.COM

11 Park Street  
Chelsea Creek  
London  
SW6 2FS

Sales +44 (0) 20 7824 7090  
paul@gartonjones.com  
www.gartonjones.com

## £925 Per Week

ONLINE VIDEO - AVAILABLE NOW - A stylish and beautifully presented two double bedrooms, two-bathroom (one en-suite) apartment to rent 938sqft (87.1sqm) located in Lockside House, Chelsea Creek. This property comes exceptionally furnished with high class furniture and offers an open plan reception with access to a private terrace overlooking the communal gardens. There is a beautifully finished kitchen with a marble top breakfast bar and integrated appliances including an induction hob, dishwasher, oven, and fridge freezer. Additionally, there is a utility cupboard housing a washer dryer, good storage throughout, wood flooring, comfort cooling and under-floor heating. The development built by the renowned Berkeley St George benefits from an on-site gym, swimming pool, spa and 24 hour concierge. Chelsea Creek is located nearby to Imperial Wharf Overground station and Fulham Broadway Underground station both offering excellent links around London as well as the famous Kings Road which offers a wide range of designer boutiques, top class restaurants, bars and quaint cafes.

London Borough Of Hammersmith & Fulham Council  
- Band G  
5 Weeks Security Deposit  
12 Month Contract

EPC 82 (B)

EPC certificate available on request.

- Two Double Bedrooms
- Beautifully Presented
- 938sqft (87.1sqm)
- High Quality Furnished Apartment
- Two Luxury Bathrooms (1 En-Suite)
- Kitchen with Integrated Appliances
- Balcony
- 24 Hour Concierge, Residents Gym with Spa Facilities & Indoor Swimming Pool
- Moments from Chelsea Harbour & Imperial Wharf Station
- EPC 82 (B)

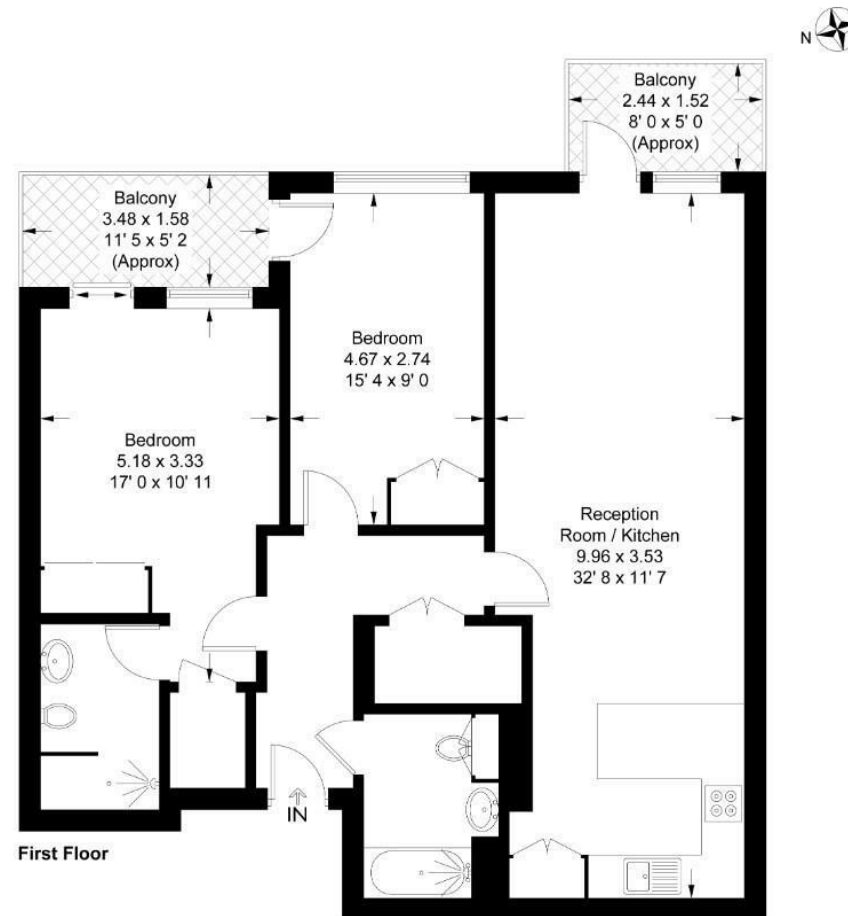


## Lockside House

Approximate Gross Internal Area = 938 sq ft / 87.1 sq m

Balcony = 99 sq ft / 9.2 sq m

GARTON JONES  
LONDON



This plan is not to scale and must be used as layout guidance only. All measurements and areas are approximate and should not be relied upon to provide accurate information. This plan must not be relied upon when making property valuations, design considerations or any other such relevant decisions. We accept no responsibility or liability (whether in contract, tort or otherwise) in relation to any loss whatsoever arising from or in connection with any use of this plan or the adequacy, accuracy or completeness of it or any information within it.





